

PHASMOPHOBIA

Essential Items

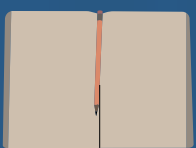
Primary Identification

Spirit Box



Used to ask a ghost questions to get more information, only certain ghosts will respond via the spirit box (detects Spirit Box evidence)

Ghost Writing Book



Used to obtain ghost writing when placed near a ghost (detects Ghost Writing evidence)

EMF Reader



Emits a reading based on a ghost's interaction with objects in a small area (detects EMF Level 5 evidence)

Video Camera



Provides a live feed to the computer monitor in the van (detects Ghost Orb evidence)

Ultraviolet Light



Detects a ghost's fingerprints and footprints (detects Fingerprint evidence)

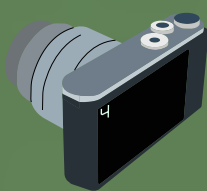
Thermometer



Reads a room's current temperature (detects Freezing Temperatures evidence)

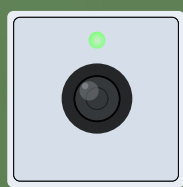
Secondary Identification

Photo Camera



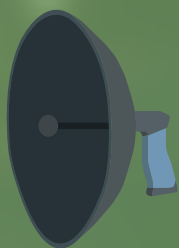
Primarily used to earn money through photo rewards, however, certain ghosts disappear when you take a picture of it

Sound Sensor



Detects any noise in a box-like area in front of the sensor

Parabolic Microphone



Detects sound through walls at great distances, portable version of the sound sensor

Motion Sensor



Detects a ghost's movements, provides a visual/audio cue whenever a ghost moves through it

Salt



Detects a ghost's movements, can reveal footprints when paired with the UV light, certain ghosts do not leave footprints

Self-Protection

Flashlight



Indicates the start of a ghost hunt by flickering on and off

Crucifix



Prevents a ghost from initiating a hunt within a small area (must be dropped on the ground, not held)

Lighter/Smudge Stick



Deters a ghost from hunting/attacking for a period of time when burned

Sanity Pills



Replenishes your sanity level, lowers frequency of ghost hunts